

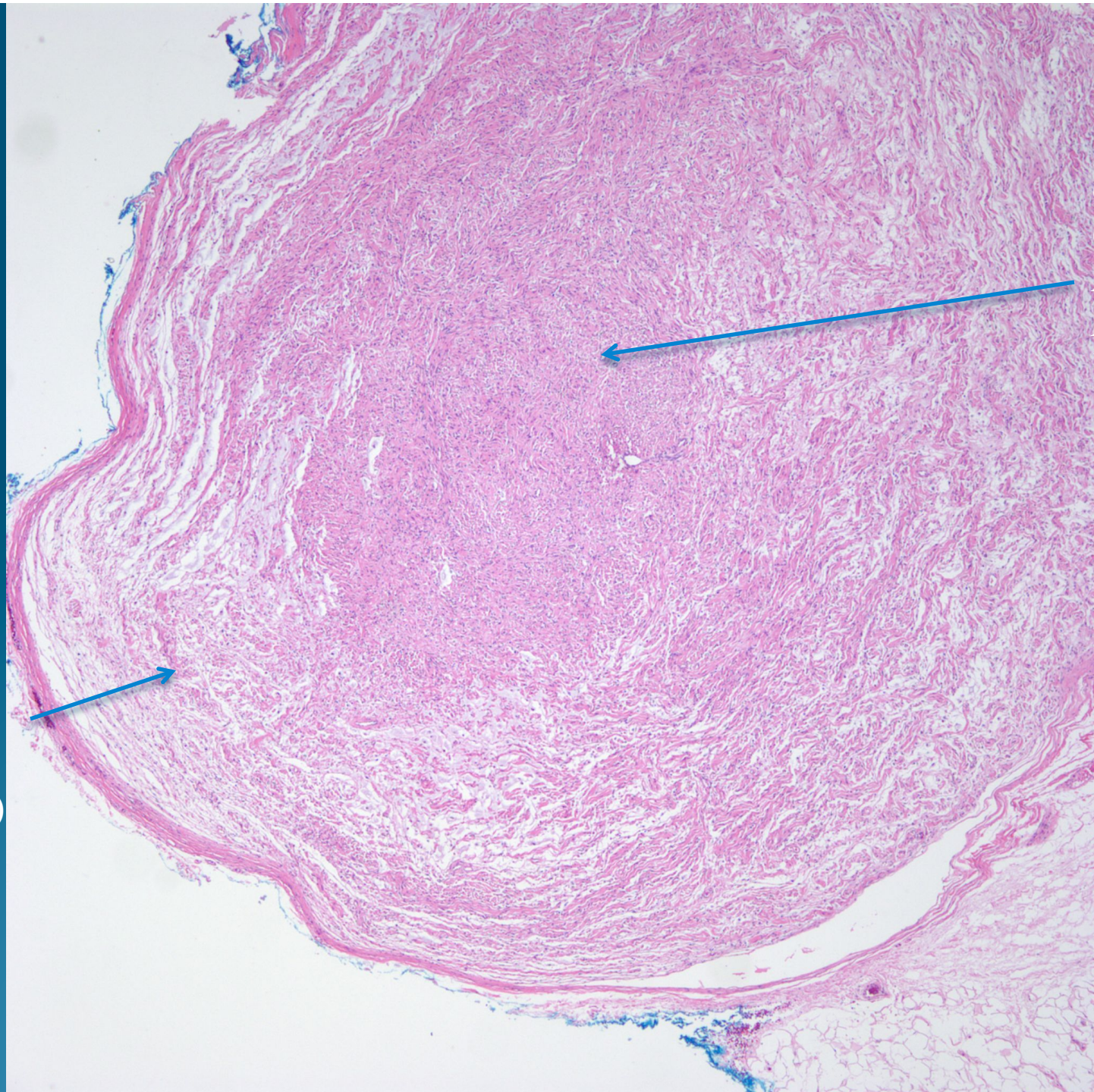
What is the best diagnosis?

- A. Palisaded and encapsulated neuroma
- B. Neurofibroma
- C. Traumatic neuroma
- D. Neurilemmoma
- E. Neurothekeoma

Neurilemmoma (Cutaneous schwannoma)

Circum-
Scribed
Dermal
tumor

Looser
Myxoid
Areas
(Antoni B)



Compact
Cellular
Area with
Areas of
Palisading
(Antoni A)